

# Urban Rooms

We are happy to introduce – Urban Rooms – installations where conversation and fun come together. Brightly coloured steel structures are shaped into forms echoing houses. The effect is immediate.

Placed on public squares, terraces, patios, gardens or parks, the minimal structures create intimate areas in the open air, stimulating interaction between people. Strangers strike up conversations and children clamber along the frame.



## Materials

Materials	Key facts	Steel thickness	Finishing	UV colour fastness	Flame retarding
<b>Stainless steel powder-coated</b>	<p>Stainless steel is made by adding chromium to molten steel. It is unusually strong and resistant to rusting caused by contact with water, even salt water.</p> <p>Powder coating is a type of coating that is applied as a free-flowing, dry powder. Powder coating is applied electrostatically and then cured under heat. It is used to create a hard finish that is tougher than conventional paint.</p>	2mm	Semi-matt	Very good: colour can fade to some extent when exposed to UV	NEN-EN 13501-1 A2-s1*
<b>Galvanized steel powder-coated</b>	<p>Galvanized steel is coated with a thin layer of zinc. The zinc coating protects the steel beneath it from rust. It is a durable and economical choice.</p> <p>Powder coating is a type of coating that is applied as a free-flowing, dry powder. Powder coating is applied electrostatically and then cured under heat. It is used to create a hard finish that is tougher than conventional paint.</p>	2mm	Semi-matt	Very good: colour can fade to some extent when exposed to UV	NEN-EN 13501-1 A2-s1*

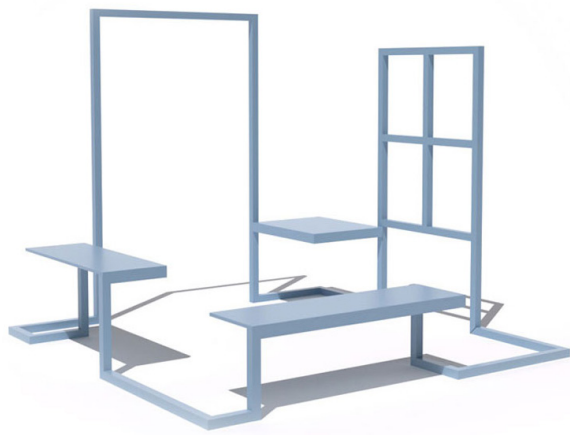
\*NEN-EN13501-1 A2-s1 Satisfying the same criteria as class B for the SBI-test according to EN 13823. In addition, under conditions of a fully developed fire these products will not significantly contribute to the fire load and fire growth.

## Colors

all RAL colors (classic palette)

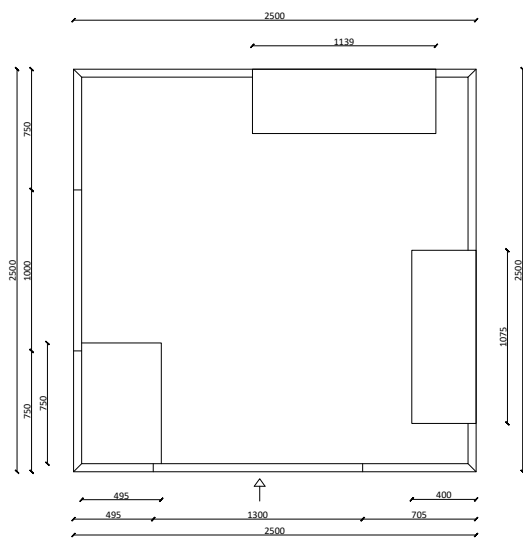
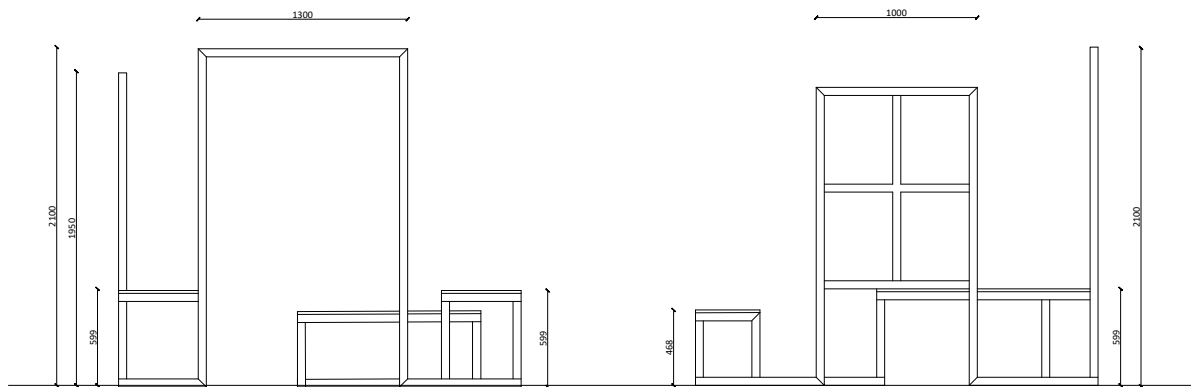


# Urban Room



Dimensions [mm] L 2500 W 2500 H 2100

Weight [kg]



# Warnings

## General

- Avoid using sharp tools to open the packaging or while using the products.
- Tripping hazard, mind your step.
- Do not put out cigarettes on the products.
- Not graffiti proof.
- Not vandalism proof.
- Deep scratches can cause rusting in galvanized steel. Deep scratches need to be protected.
- Do not leave children unattended whilst playing on the objects.
- Colours can differ over years and from batch to batch.

## Product

- Do not drag the products, but carry them with minimum 2 people.
- Anchoring the product has to be done by a qualified team.
- Use protective feet for indoor use.
- Max. 2 people per seat.
- Clean stains with water and delicate soap.

## Powder-coating

- White powder-coating requires more maintenance.
- Do not use abrasive scouring powders or scourers as they will scratch the surface.
- Colour can fade to some extent when exposed to UV.
- Flame retarding - NEN-EN13501-1 A2-s1 - Satisfying the same criteria as Class B for the SBI-test according to EN13823. In addition, under conditions of a fully developed fire these products will not significantly contribute to the fire load and fire growth.
- Dark colors can get very hot in sunny weather.

# Assembly and anchoring

The products are delivered in 4 large pieces which need to be assembled. We advise to anchor the products to the ground. The products are delivered with custom-made connectors to mount them to the ground.

# Applications

- Shared public spaces
- Urban squares
- Patios or courtyards
- Parks and gardens
- Company terraces
- Outdoor restaurants / picnic areas
- Indoor as well as outdoor

Find more at [www.boloz.eu](http://www.boloz.eu)

# BOLAZ